

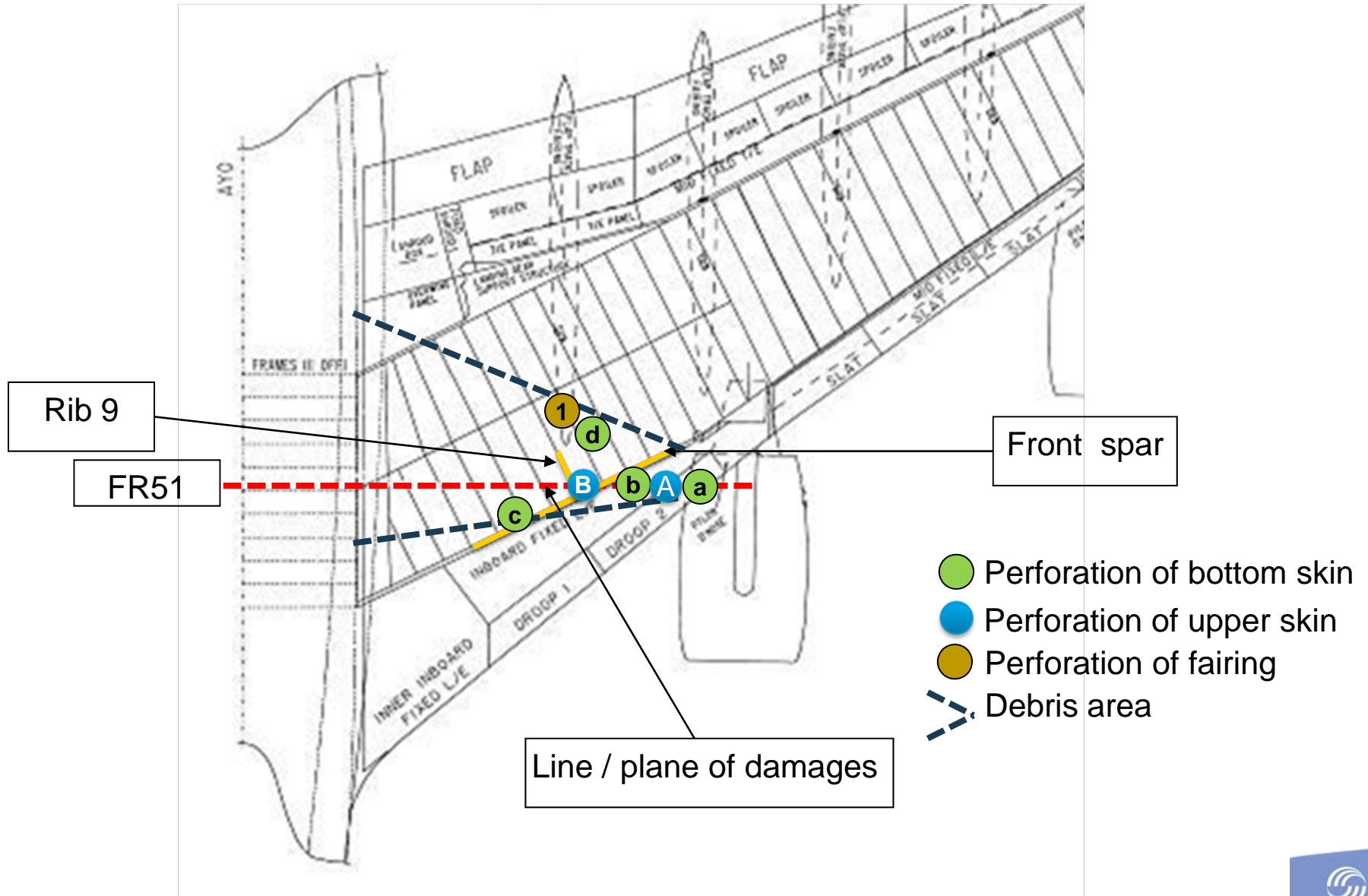
Presented by

Thomas MONTAGNÉ
Technical Services Manager

A380 – QFA – MSN 014

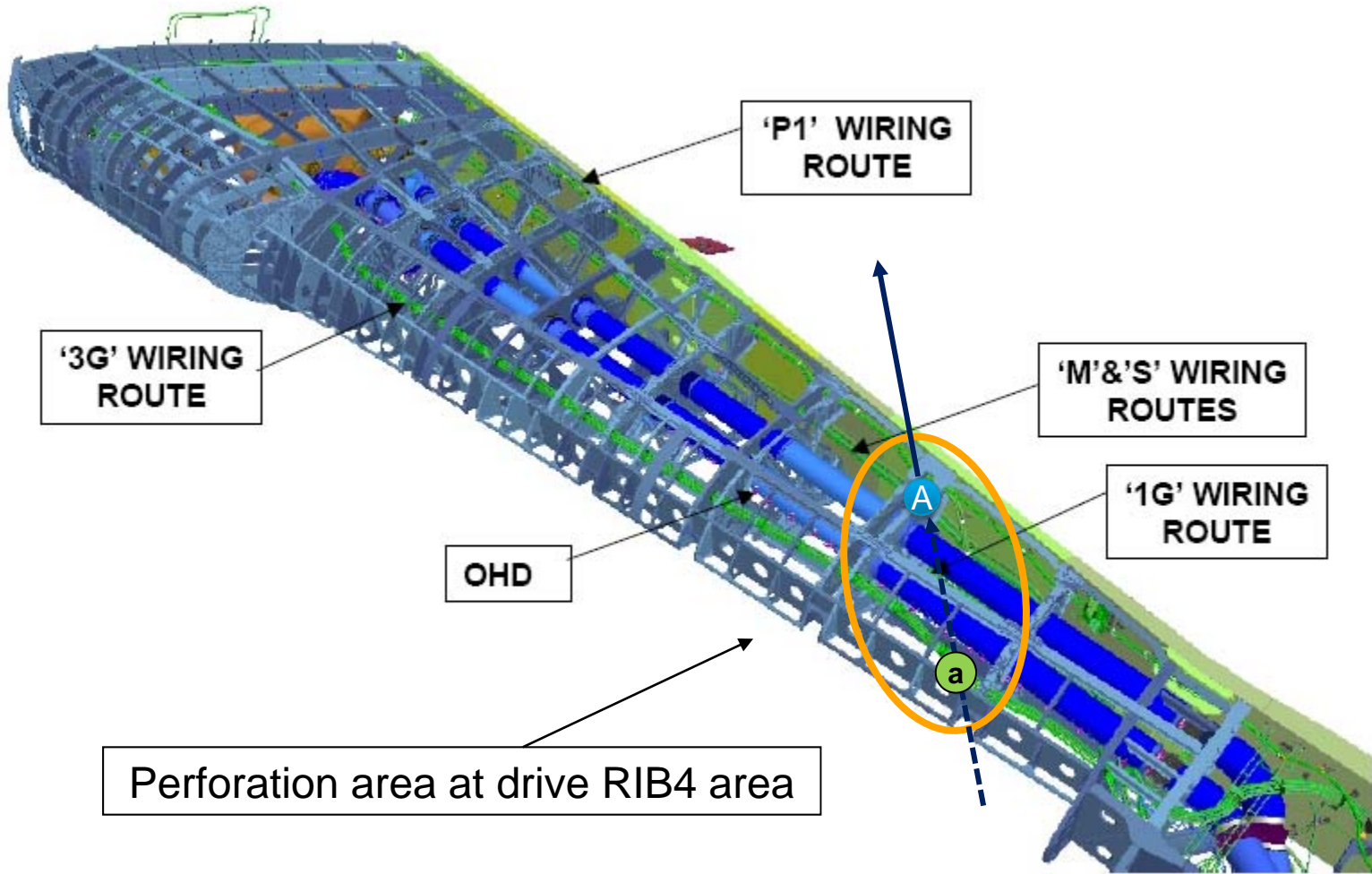
ENGINE #2 FAILURE INCIDENT – OVERVIEW OF MAJOR DAMAGES

Wing Skin – Overview – Major damages



© AIRBUS S.A.S. All rights reserved. Confidential and proprietary document.

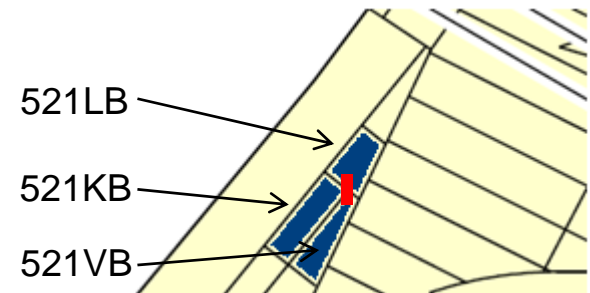
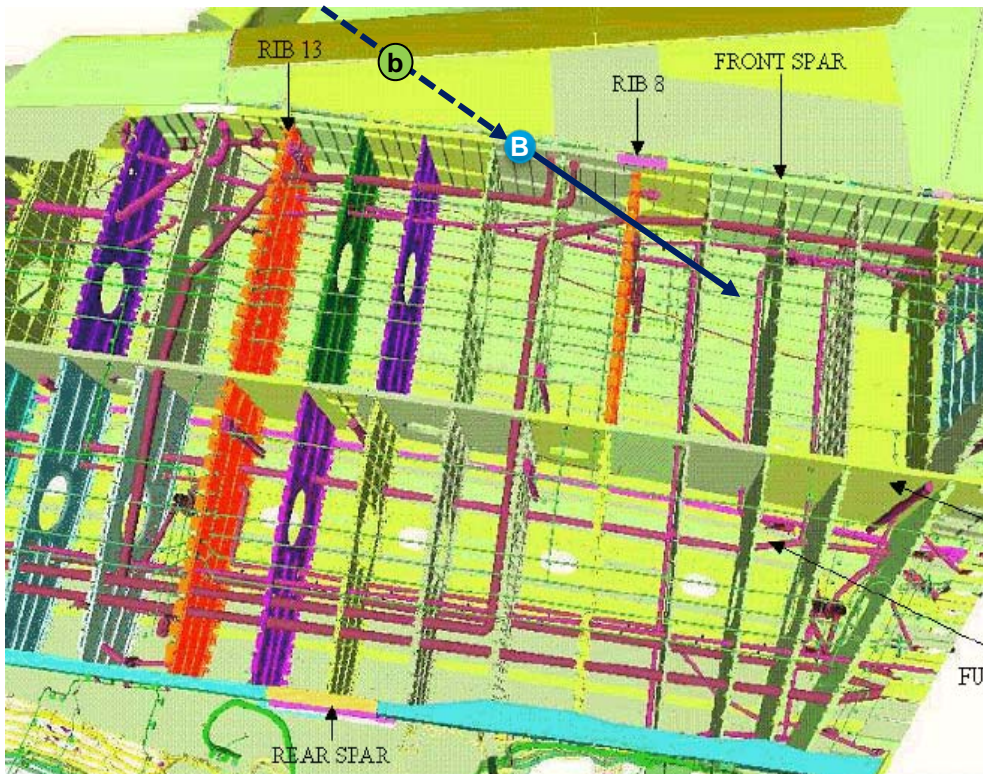
Damage a-A – Droop Nose N°2



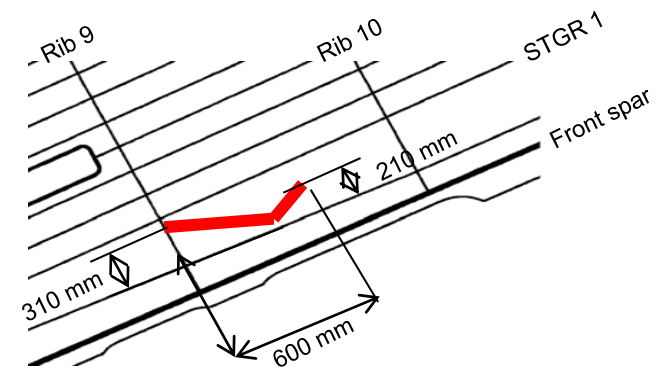
© AIRBUS S.A.S. All rights reserved. Confidential and proprietary document.

Damage b-B

- Damage description: foreign object crossed the droop nose #2 from junction of panels 521KB-521VB-521LB (bottom skin) to leading edge inboard top panel (P/N L57452496000) upper skin

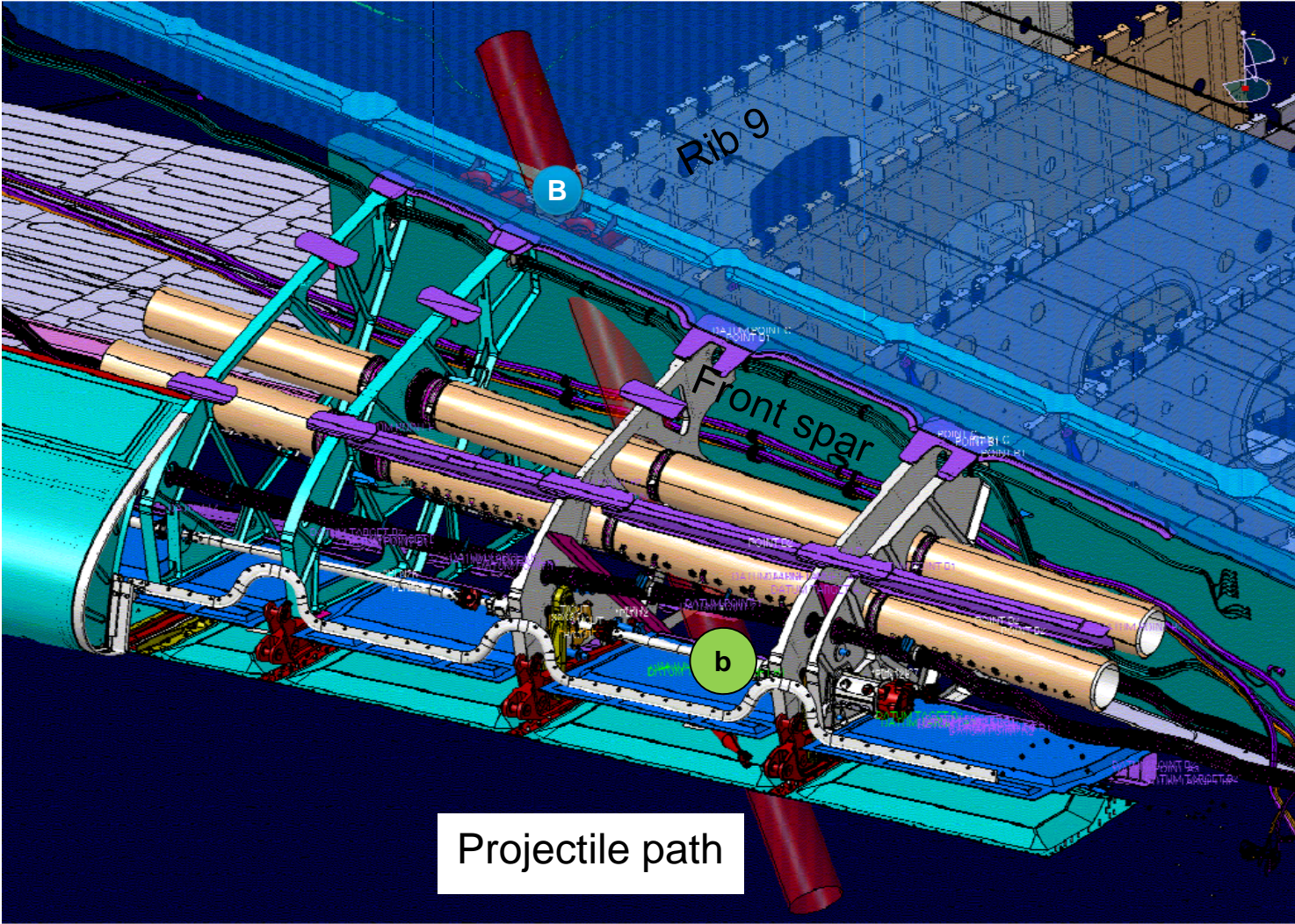


Damage b



Damage B

Damage b-B (cont'd)

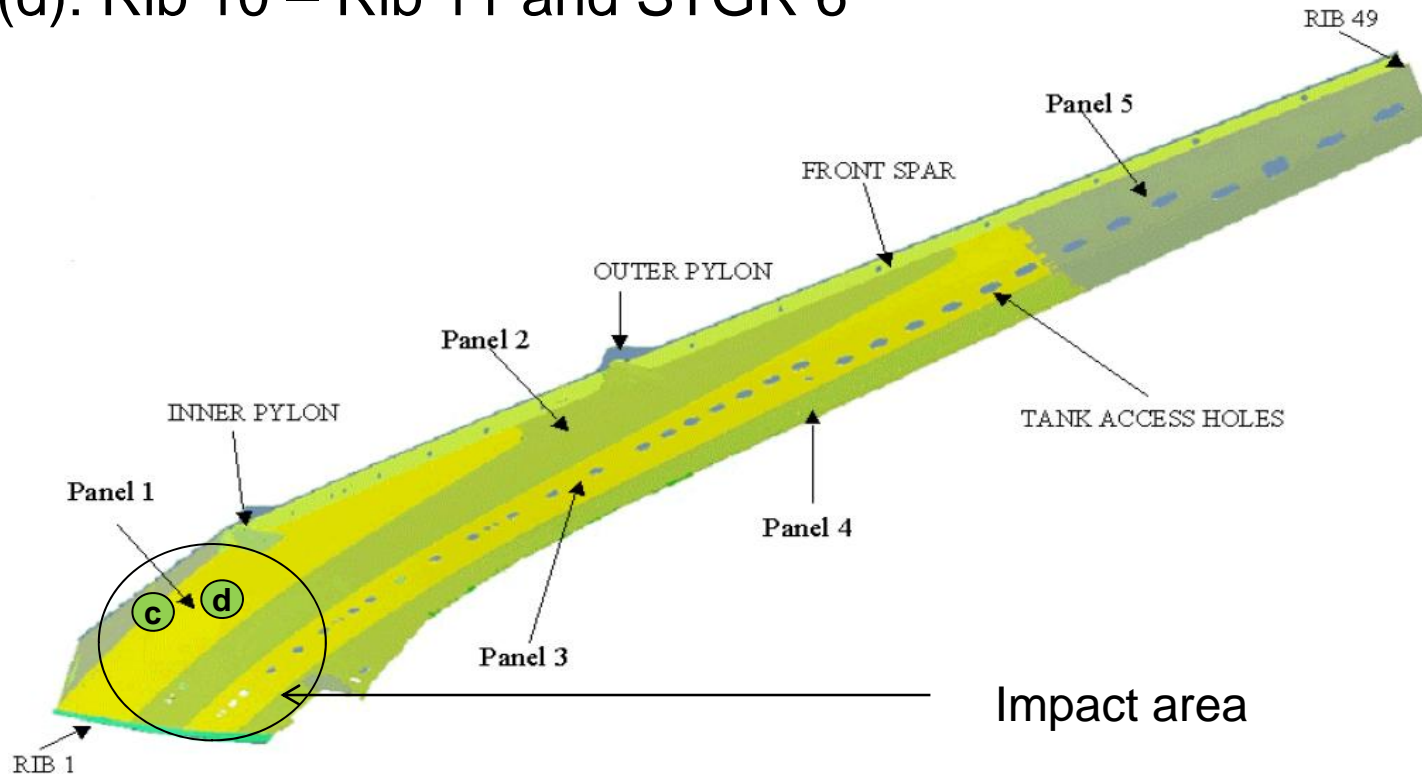


© AIRBUS S.A.S. All rights reserved. Confidential and proprietary document.



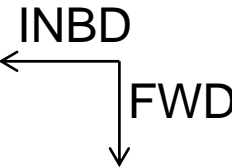
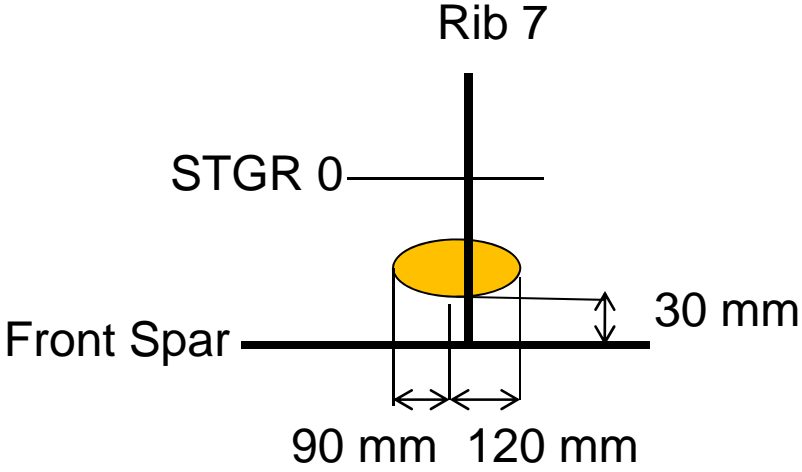
Bottom Skin panel – Major damages

- Inner tank has 2 perforations on panel 1: damages (c) and (d)
- Positions:
 - ▶ (c): Rib 7 and STGR 0
 - ▶ (d): Rib 10 – Rib 11 and STGR 6

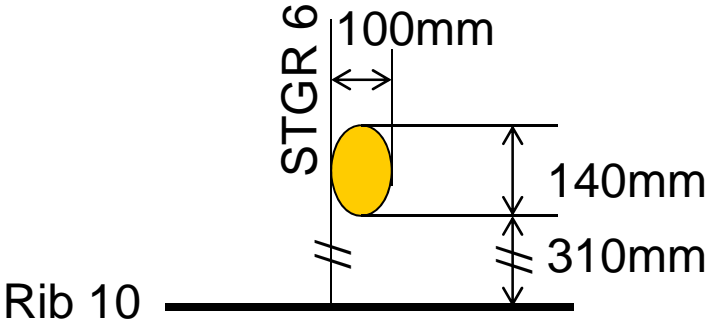


Bottom Skin panel – Major damages (Cont'd)

- (c): Rib 7 and STGR 0



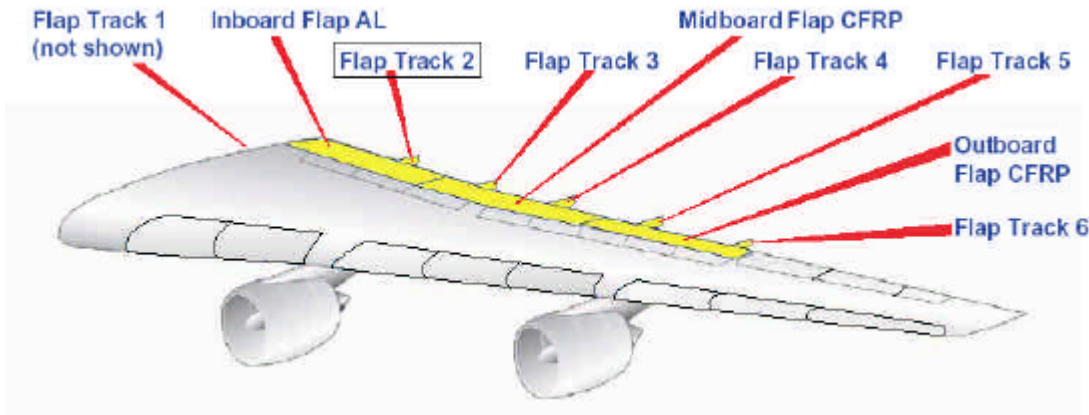
- (d): Rib 10 – Rib 11 and STGR 6



© AIRBUS S.A.S. All rights reserved. Confidential and proprietary document.



Flap Track Fairings (FTF 2 & 3)

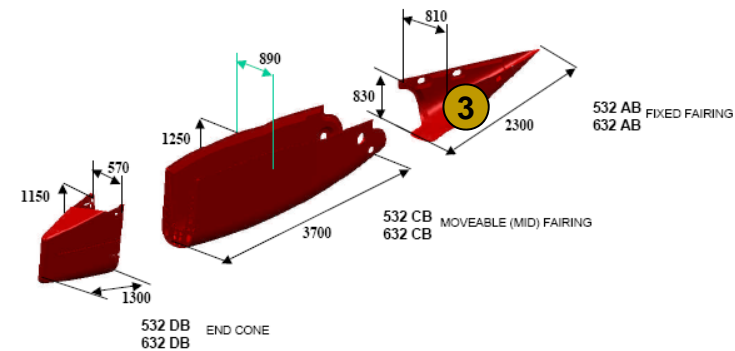
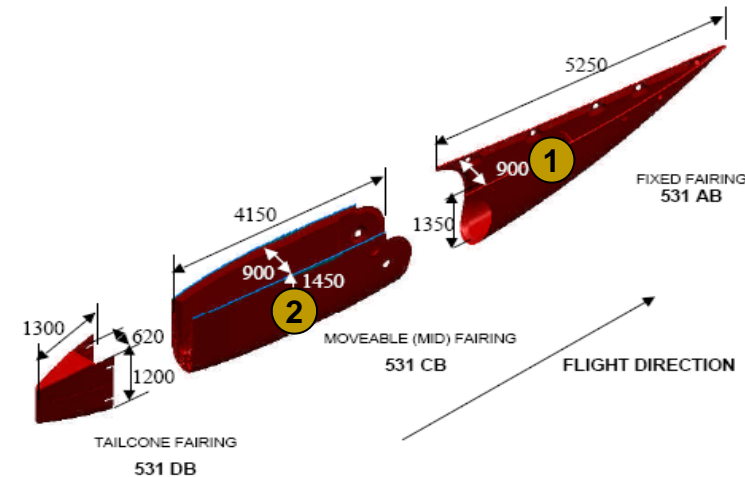


- Damages on FTF #2:

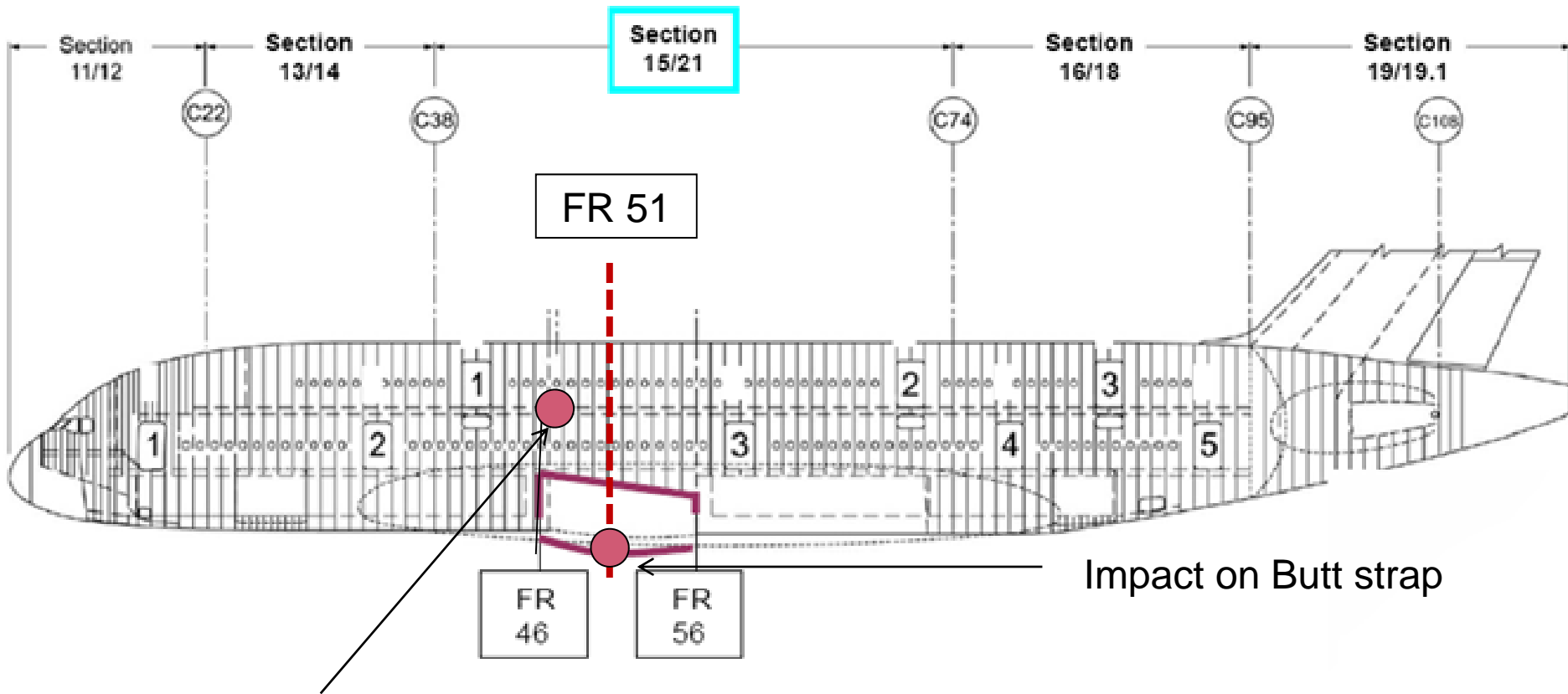
- ▶ Damage (1): foreign object damaged the fixed FTF
- ▶ Damage (2): Movable FTF small impact

- Damages on FTF #3

- ▶ Damage (3): small impact on fixed fairing

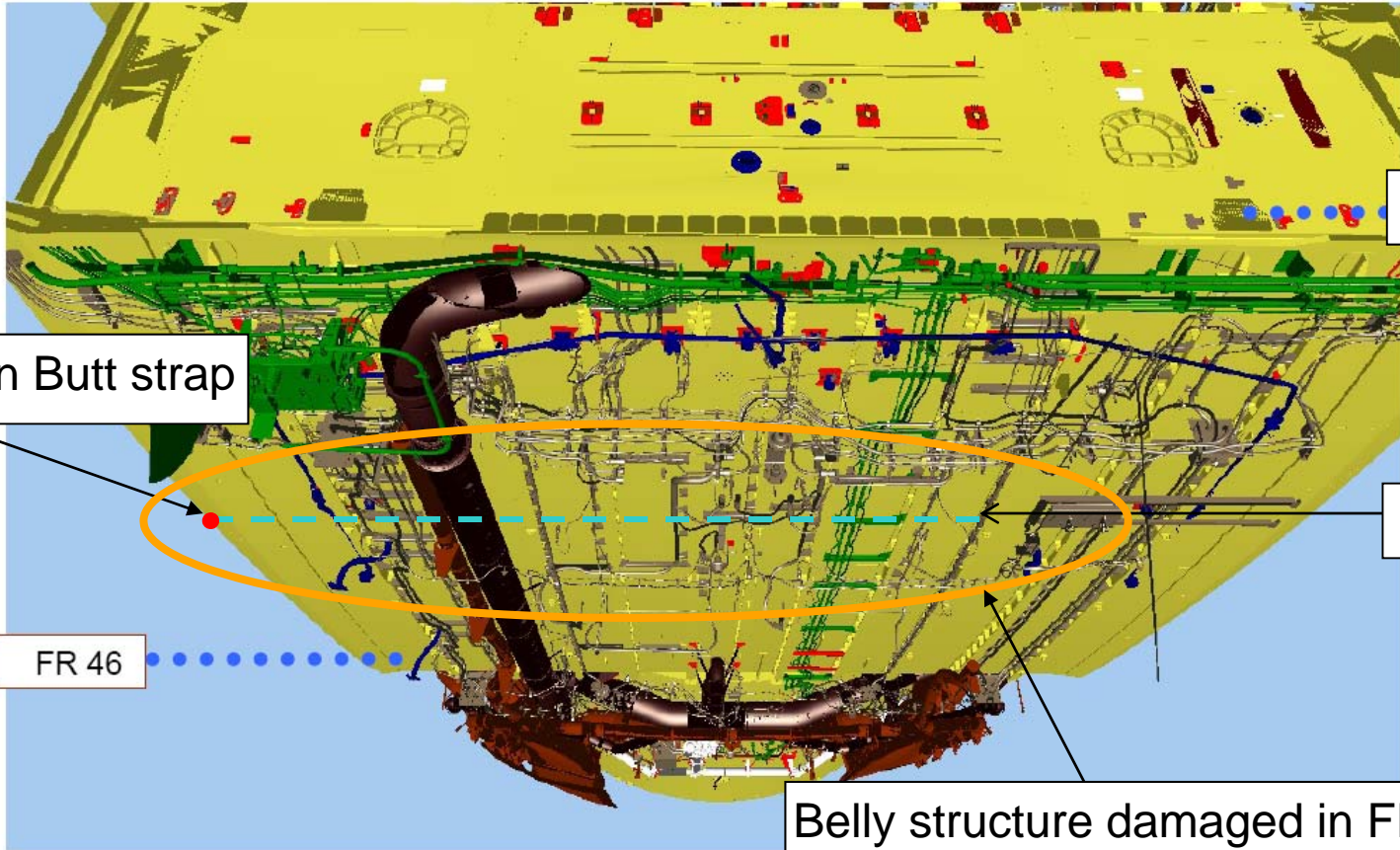


Fuselage / Belly fairing – Major damages



Impact at
FR46/47 and STGR27LH

Belly Fairing area



Impact on Butt strap

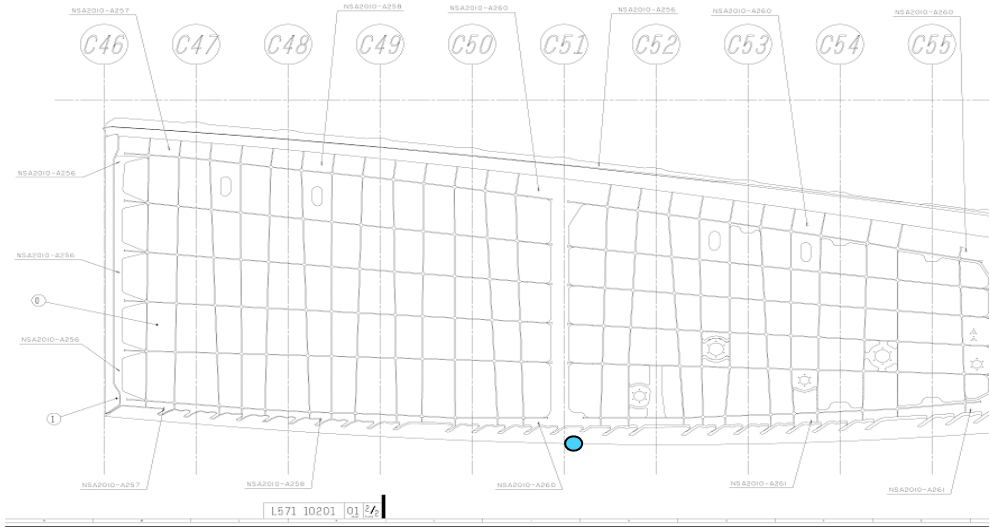
FR 56

FR 51

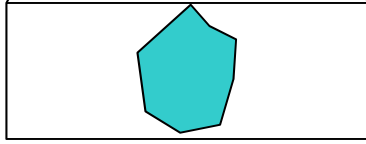
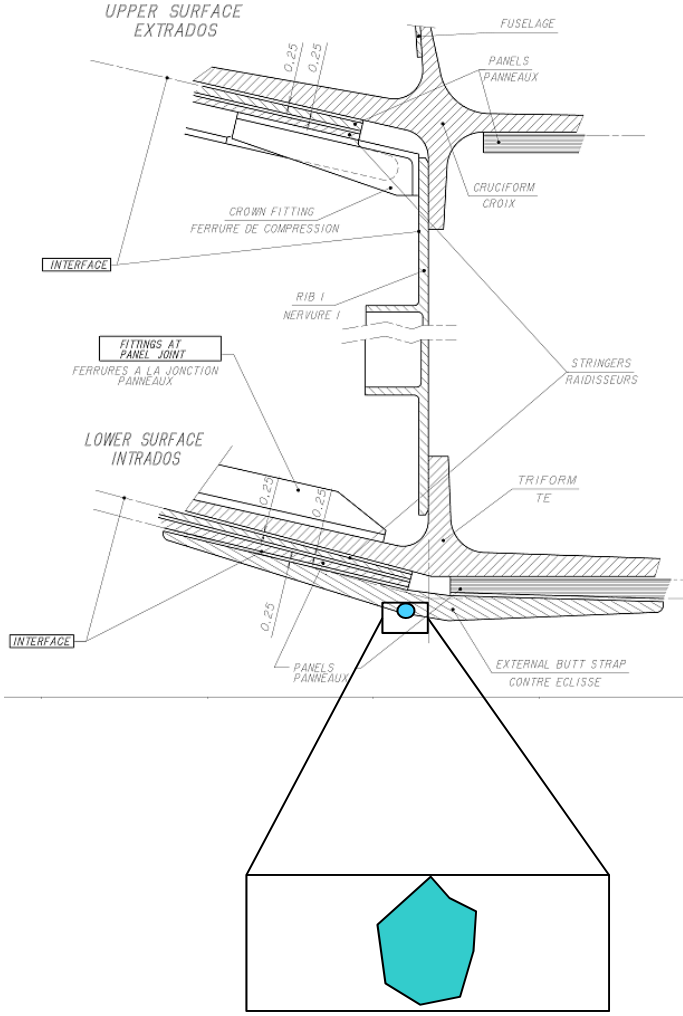
FR 46

Belly structure damaged in FR51 area

Buttstrap damaged at FR51



Damage location: FR 51
 Depth: 11 mm
 Dimensions not yet measured



© AIRBUS S.A.S. All rights reserved. Confidential and proprietary document.



Engine / Nacelles

- Engine #2 not yet removed
- Pylon #2 will be inspected after engine removal
- Impacts on access panels on pylon #1 and #2
- Impact on engine #1 fan cowl

© AIRBUS S.A.S. All rights reserved. Confidential and proprietary document.

This document and all information contained herein is the sole property of AIRBUS S.A.S.. No intellectual property rights are granted by the delivery of this document or the disclosure of its content. This document shall not be reproduced or disclosed to a third party without the express written consent of AIRBUS S.A.S. This document and its content shall not be used for any purpose other than that for which it is supplied.

The statements made herein do not constitute an offer. They are based on the mentioned assumptions and are expressed in good faith. Where the supporting grounds for these statements are not shown, AIRBUS S.A.S. will be pleased to explain the basis thereof.

AIRBUS, its logo, A300, A310, A318, A319, A320, A321, A330, A340, A350, A380, A400M are registered trademarks.

